



**Property type :** Villa

**Location :** Moraira\_Teulada

**Bedrooms :** 4

**Bathrooms :** 4

**Swimming pool :** Private

**Garden :** Private

**Views :** Sea views

**Parking :** Communal Parking

**Built surface :** 346 m<sup>2</sup>

**Plot surface :** 13000 m<sup>2</sup>

✓ Solarium

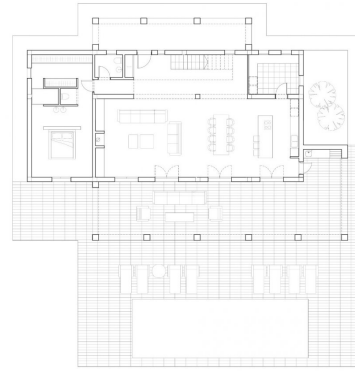
✓ Pre-air conditioning

Newly built villa in Teulada with mountain views. On the ground floor we find a large living-dining area and open plan kitchen, master bedroom with walking wardrobe and bathroom, front terrace with access to the pool. On the first floor is 3 bedrooms with fitted wardrobes, 3 bathrooms en suite. As well here you have basement of 81m2 with wine cellar. Villa will be build using high quality materials. The kitchen will be chosen by the client, kitchen cabinets, worktop and appliances. Air conditioning with climate control system (condense) in the living rooms and bedrooms. Mitsubishi brand. The swimming pool will be built with an outdoor shower (hot/cold water connection). Automatic entrance gate for the cars with remote control and automatic pedestrian door. Garden to be chosen by the client. Moraira is a small town with with good restaurants, bars and plenty of supermarkets around. There is a very pleasant beach right next to town that is great for families. The seafront offers tremendous views of Penon Ifach across the bay in Calpe. The coast road getting there is well worth doing with some spectacular views. Moraira situated about 1 hour 15 minutes North up the A7 from Alicante airport its fairly easy to get to. It's about the same distance or a little less South from Valencia airport.

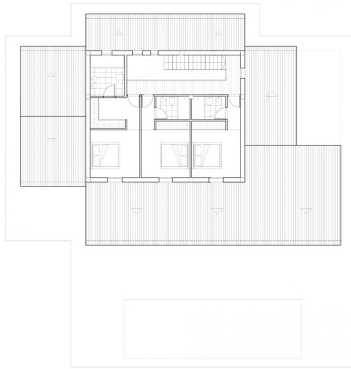




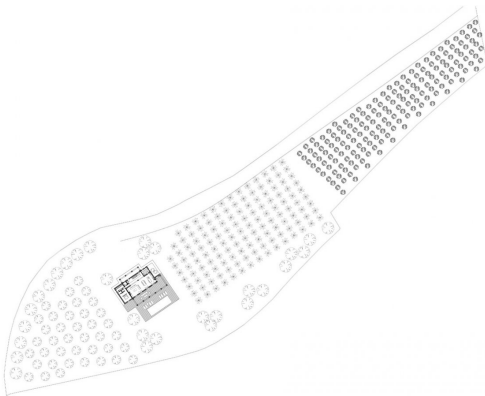
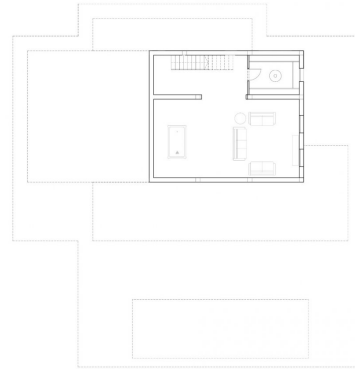
Superficies	Construções
Planta Baixa	
Vivienda	168,35 m <sup>2</sup>
Porche 1	23,84 m <sup>2</sup>
Porche 2	77,07 m <sup>2</sup>
Terrapço	47,65 m <sup>2</sup>
Piscina	48,00 m <sup>2</sup>
Áreas	43,63 m <sup>2</sup>
Planta Alta	
Vivienda	97,00 m <sup>2</sup>
Planta Sótano	
Vivienda	81,54 m <sup>2</sup>
Boxeado	12,60 m <sup>2</sup>



Superficies	Construidas
Floresta Baixa	
Viveiro	168,35 m <sup>2</sup>
Parede 1	23,84 m <sup>2</sup>
Parede 2	77,03 m <sup>2</sup>
Terreno	
Pinheiro	47,06 m <sup>2</sup>
Acervo	43,63 m <sup>2</sup>
Floresta Alta	
Viveiro	97,00 m <sup>2</sup>
Floresta Sólida	
Viveiro	81,54 m <sup>2</sup>
Sede	12,60 m <sup>2</sup>



Superfície	Construída
Pavimento Asfalto	
Vivienda	168.35 m <sup>2</sup>
Porche 1	23.84 m <sup>2</sup>
Porche 2	77.07 m <sup>2</sup>
Terrazo	147.05 m <sup>2</sup>
Piscina	48.00 m <sup>2</sup>
Acera	43.63 m <sup>2</sup>
Pavimento Adm.	
Vivienda	97.00 m <sup>2</sup>
Pavimento Sólido	
Vivienda	81.54 m <sup>2</sup>
Boxing	12.60 m <sup>2</sup>

EMPLAZAMIENTO  
E. T. 1998