



**Property type :** Apartment

**Location :** Alhama De Murcia

**Bedrooms :** 2

**Bathrooms :** 2

**Swimming pool :** Communal

**Parking :** Communal Parking

**Built surface :** 71 m<sup>2</sup>



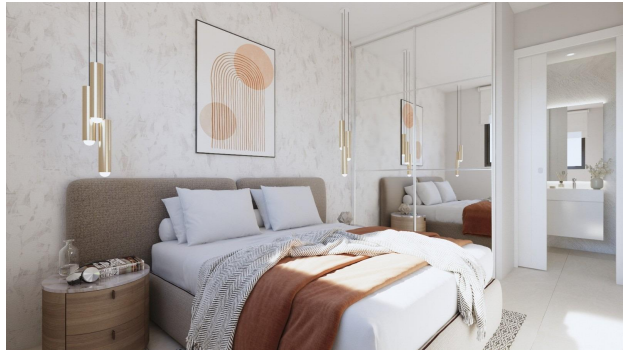
Lift



Pre-air conditioning

NEW APARTMENTS IN CONDADO DE ALHAMA GOLF COURSE ☐☐ New two-bedroom, two-bathroom apartments with frontline golf views of ALHAMA SIGNATURE GOLF, a fabulous 18-hole golf course designed by Jack Nicklaus. CONDADO DE ALHAMA is a fantastic Golf Resort with many facilities and services. A shopping centre, sports centre, a range of bars and restaurants, supermarket... and more than 25 communal swimming pools and gardens. Only 18 minutes by car from the new International Airport of the Region of Murcia. ☐☐ The apartments have an area between 73.88m<sup>2</sup> and 75.22m<sup>2</sup> divided into 2 bedrooms, 2 bathrooms, an open living-kitchen-dining room of 26.80m<sup>2</sup>, and a 17m<sup>2</sup> terrace. ☐ Included: ☐☐ Parking lot ☐ Complete bathroom ☐ Pre-installation of air conditioning ☐ Video intercom ☐☐ This promotion enjoys a 24-hour surveillance system every day of the year. We will also enjoy the magnificent views of the golf course and we will be able to be on the beaches of Mazarrón just 15 minutes away by car. ☐





**BLOQUE DE 8 VIVIENDAS**



**Vivienda 1<sup>ª</sup> A (Planta Primera)**