

**Property type :** Terraced

**Location :** Fuente Álamo

**Bedrooms :** 2

**Bathrooms :** 2

**Swimming pool :** Private

**Garden :** Private

**Parking :** Communal Parking

**Built surface :** 70 m<sup>2</sup>

**Plot surface :** 150 m<sup>2</sup>

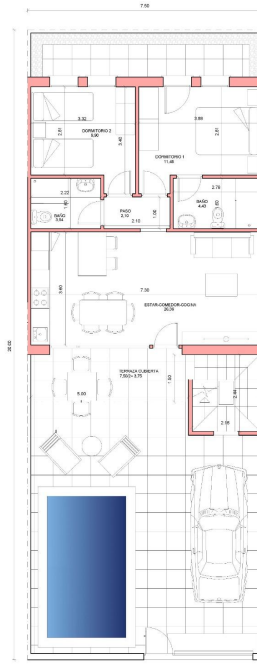
✓ Pre-air conditioning

✓ Solarium

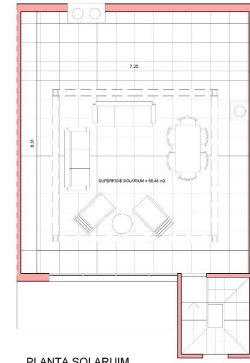
Newly built residential development of villas and townhouses in Fuente Álamo, Murcia. This location offers an exceptional natural environment, far from the hustle and bustle of big cities and the tourist pressure of the coast. Furthermore, we are committed to working from a sustainable development perspective, minimising our environmental impact and maximising integration with the local community. Here, your dreams of a peaceful and sustainable lifestyle become a reality. Imagine waking up every morning in a stunning natural setting, surrounded by peaceful landscapes and the unique beauty of the Murcian countryside. This development prioritises energy efficiency, the use of environmentally friendly materials and harmonious integration with the rural environment. From the design of the property to the planning of the development, we strive to reduce our carbon footprint and promote responsible practices in all our operations. Video intercom system. Colour-lacquered security access door with lock and anti-vandal security fittings. Cupboards with storage space, lined inside, lacquered in white. Kitchen furniture with appliances included. Hot water by aerothermal energy. Electric blinds. Pergolas in solariums. Private 2.5x4.5m swimming pool with underwater night lighting and salt chlorination system. Pre-installation for outdoor kitchen/jacuzzi in solarium. Fuente Álamo de Murcia is a town and municipality in the Region of Murcia, in southern Spain. It is located 22 km northwest of Cartagena and 35 km southwest of Murcia. The town is located in the Mar Menor basin, surrounded by the Algarrobo, Los Gómez, Los Victorias and Carrascoy mountain ranges. The water from these mountains flows down into the Rambla de Fuente Álamo and then into the Mar Menor. Fuente Álamo is 30 minutes from Murcia - Corvera airport. Nearest shops 6 km away.







PLANTA BAJA



PLANTA SOLARIUM

SUP. UTIL : 61,54 M2.  
 SUP. CONSTRUIDA: 70,00 M2.  
 SUP. DE PARCELA NETA: 150,00 M2.