



C&C INMOASESORES
Servicios inmobiliarios

2 bedroom Penthouse in Santa Pola

Ref: N8188

€310,000



Property type : Penthouse

Location : Santa Pola

Bedrooms : 2

Bathrooms : 2

Swimming pool : Communal

Parking : Communal Parking

Built surface :

94 m²

- ✓ Gym
- ✓ Solarium

- ✓ Lift

- ✓ Pre-air conditioning

NEW BUILD RESIDENTIAL COMPLEX IN SANTA POLA
New Build modern gated residential complex consisting of 1, 2 and 3 bedroom apartments and penthouses with 2 complete bathrooms. The complex consists of 4 staircases of flats with spacious landscaped communal areas, including swimming pool, relaxation area and gymnasium. All properties have been carefully designed to provide you with an exceptional living experience, with high quality finishes and a modern style. Enjoy the spacious terraces, where you can relax, enjoy al fresco dining and watch the most spectacular sunsets. The location is simply unbeatable: next to the centre of Santa Pola and the palm grove, and only a few minutes from the promenade, you will be close to a wide range of restaurants, bars and supermarkets. Excellent connection with the national road 332, which connects all the southern Costa Blanca, and with the airport in only 15 minutes.

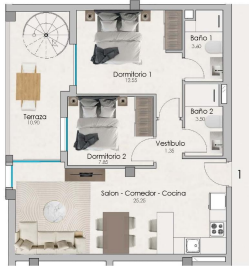




PLANTA ATICO / ESCALERA 3
VIVIENDA 1

SUPERFICIE UTILES		SUPERFICIE CONSTRUIDAS	
Salon-comedor cocina	25,25	Cerrada	€135
Piso	1,25	Abierta	\$338
Dormitorio 1	12,50		
Baño 1	3,85		
Dormitorio 2	7,85		
Baño 2	3,90		
Terraza	10,90		
Solarium	20,35		
TOTAL	86,20		14,88

Las superficies indicadas se han con carácter informativo, no constituyen y pueden sufrir alguna alteración por modificaciones técnicas de proyecto de construcción.



PLANTA SOLARIUM / ESCALERA 3
VIVIENDA 1

SUPERFICIE UTILES		SUPERFICIE CONSTRUIDAS	
Salon-comedor cocina	25,25	Cerrada	€135
Piso	1,25	Abierta	\$338
Dormitorio 1	12,50		
Baño 1	3,85		
Dormitorio 2	7,85		
Baño 2	3,90		
Terraza	10,90		
Solarium	20,35		
TOTAL	86,20		14,88

Las superficies indicadas se han con carácter informativo, no constituyen y pueden sufrir alguna alteración por modificaciones técnicas de proyecto de construcción.

