



**Property type :** Penthouse

**Location :** Hondón de las Nieves

**Bedrooms :** 3

**Bathrooms :** 2

**Swimming pool :** Communal

**Parking :** Communal Parking

**Built surface :** 126 m<sup>2</sup>



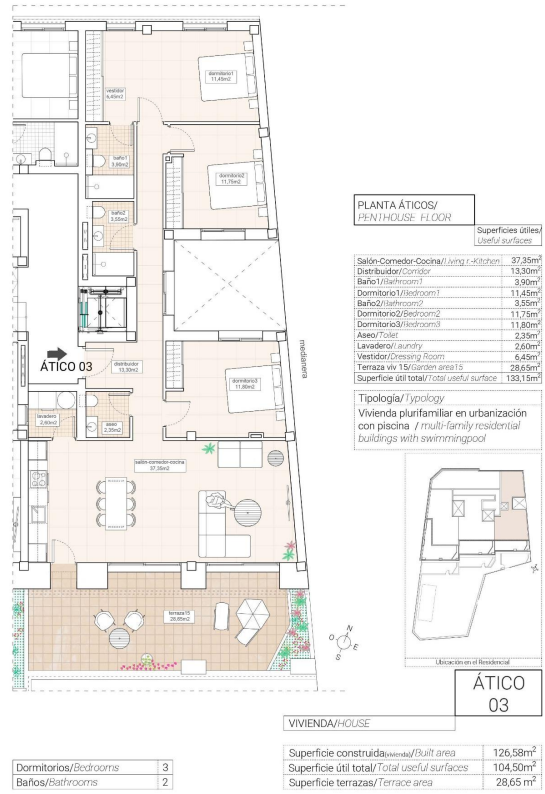
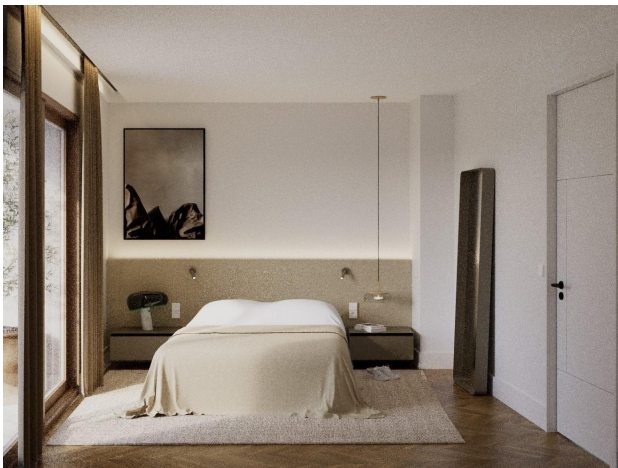
Lift



Pre-air conditioning

Exclusive New Build Apartments with Views of the Vineyards in Hondón de las Nieves – Modern Homes in a Unique Natural Setting – Discover this new development of flats in Hondón de las Nieves, a charming village set in a beautiful valley surrounded by olive and almond groves. This development offers 15 exclusive 2 and 3 bedroom homes, all designed to offer maximum comfort, energy efficiency and stunning views of the Vinalopó vineyards. Located in Vinalopó Medio, this peaceful enclave is ideal for those seeking a relaxed Mediterranean lifestyle, with easy access to nature and all essential services. High Quality Features and Modern Design – Each flat has been designed with top quality materials and a functional layout, offering: – Spacious and open-plan living spaces, ideal for modern living. – Fully fitted kitchens with granite worktops. – Top of the range bathrooms with built-in cisterns and top quality sanitary ware. – Energy efficiency with aerothermal system for hot water. – Pre-installation of ducted air conditioning, guaranteeing comfort in all seasons. – Aluminium windows with double glazing, providing thermal and acoustic insulation. – Reinforced security entrance door for peace of mind. – Parking space and storage room in basement, included in the price. – Lift in the building, ensuring accessibility and comfort. – Solar panels on the rooftop to improve energy efficiency and reduce maintenance costs. In addition, the residential has a communal swimming pool, perfect for enjoying the Mediterranean climate. Privileged location in Hondón de las Nieves – Hondón de las Nieves is a town with a great wine-growing tradition, famous for its table grapes with the Vinalopó denomination of origin. Surrounded by the Sierra de Crevillente, the area offers numerous hiking trails, natural areas and a rich cultural and historical offer. From your new home, you will have quick access to the main points of interest in the area: – Alicante Airport - 30 km (30 minutes by car). – Alicante Beaches - 35 km (35 minutes by car) – Elche - 20 km (20 minutes by car) – Crevillente Natural Park - 10 km (15 minutes drive) – Golf Courses - 25 km (30 minutes drive) – An Ideal Home on the Costa Blanca – Enjoy the tranquillity of the Hondón Valley, without giving up the proximity to Alicante and Elche. Whether as a permanent residence, holiday home or investment property, these modern flats are an unbeatable choice. Contact us today for more information or to arrange a viewing.





Dormitorios/Bedrooms	3
Baños/Bathrooms	2