



**Property type :** Villa

**Location :** Benissa

**Bedrooms :** 4

**Bathrooms :** 4

**Swimming pool :** Private

**Garden :** Private

**Views :** Sea views

**Parking :** Communal Parking

**Built surface :** 502 m<sup>2</sup>

**Plot surface :** 1017 m<sup>2</sup>

✓ Lift

✓ Laundry room

Luxury Contemporary Villa with Panoramic Sea Views in Montemar, Benissa

Exclusive New Build Villa in Benissa Costa

Located in the prestigious residential area of Montemar, in the sought after San Jaime area of Benissa, this exceptional new build villa combines contemporary architecture, Mediterranean elegance and spectacular sea views. Positioned on an elevated plot with panoramic vistas stretching from Moraira to Calpe, the property offers privacy, tranquility and a seamless connection with the surrounding landscape.

Benissa Costa is one of the most desirable locations on the Costa Blanca North, known for its beautiful coves, natural scenery, luxury villas and relaxed Mediterranean lifestyle. The area enjoys excellent access to nearby coastal towns, fine dining restaurants, golf courses and marinas, making it ideal for permanent living or a luxury holiday home.

Architectural Design Integrated with Nature

This impressive residence has been designed across four levels connected by both stairs and a private lift, perfectly adapting to the natural slope of the plot. The architecture combines clean lines, natural stone, wood finishes and large glass surfaces to create bright interiors filled with natural light and uninterrupted sea views.

The main living floor features an elegant open plan design with spacious living and dining areas connected to a fully equipped modern kitchen. Floor to ceiling windows create a seamless transition to the outdoor terraces and infinity style swimming pool, allowing indoor and outdoor living to merge naturally.

A central interior patio brings additional light and greenery into the home, creating a calm and sophisticated atmosphere throughout the property.

Spacious Bedrooms and Private Guest Area

The villa offers four spacious bedrooms with ensuite bathrooms distributed across different levels for maximum comfort and privacy.

The guest level includes two elegant bedrooms with direct access to a private terrace overlooking the Mediterranean Sea. The upper floor hosts two exclusive suites with private terraces and spectacular panoramic views.

The lower level includes a large garage for two vehicles, technical areas and additional storage space, all discreetly integrated into the architectural design.

Premium Features and High End Finishes

This luxury villa is equipped with premium specifications and advanced technology for maximum comfort and energy efficiency:

- Fully equipped designer kitchen
- Underfloor heating with aerothermal system
- Fully installed air conditioning
- Home automation system for lighting and climate control
- Alarm system and video intercom

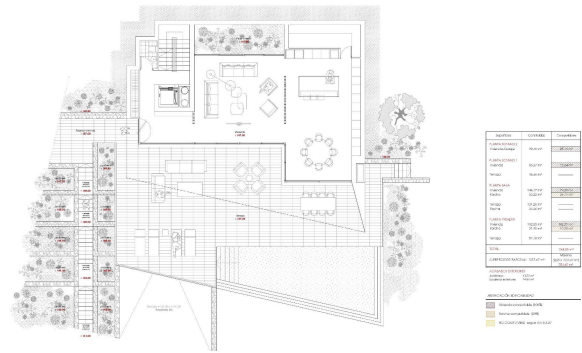
Excellent Location on the Costa Blanca

- Moraira center and beaches: 2 km
- Calpe: 10 km
- Ífacha Golf Club: 3 km
- Moraira Marina: 6 km
- Alicante Airport: 90 km
- Valencia Airport: 120 km
- La Fustera Beach: 4 km

Your Mediterranean Dream Home Awaits

This contemporary villa in Benissa offers an exceptional lifestyle defined by luxury, privacy and breathtaking sea views. Contact us today for more information or to arrange a private viewing of this unique property on the Costa Blanca.





Simbol	Legenda	Spesifikasi
[Symbol]	Living Room	100 m <sup>2</sup>
[Symbol]	Dining Room	80 m <sup>2</sup>
[Symbol]	Kitchen	60 m <sup>2</sup>
[Symbol]	Bedroom 1	120 m <sup>2</sup>
[Symbol]	Bedroom 2	100 m <sup>2</sup>
[Symbol]	Bathroom	40 m <sup>2</sup>
[Symbol]	Staircase	20 m <sup>2</sup>
[Symbol]	Storage	10 m <sup>2</sup>
[Symbol]	Utility	10 m <sup>2</sup>
[Symbol]	Pool	150 m <sup>2</sup>
[Symbol]	Garage	100 m <sup>2</sup>
[Symbol]	Landscaping	200 m <sup>2</sup>
[Symbol]	Driveway	50 m <sup>2</sup>
[Symbol]	Entrance	20 m <sup>2</sup>
[Symbol]	Reception	30 m <sup>2</sup>
[Symbol]	Office	40 m <sup>2</sup>
[Symbol]	Library	50 m <sup>2</sup>
[Symbol]	Art Studio	60 m <sup>2</sup>
[Symbol]	Yoga Studio	70 m <sup>2</sup>
[Symbol]	Spa	80 m <sup>2</sup>
[Symbol]	Massage Room	90 m <sup>2</sup>
[Symbol]	Relaxation Room	100 m <sup>2</sup>
[Symbol]	Breakfast Room	110 m <sup>2</sup>
[Symbol]	Bar	120 m <sup>2</sup>
[Symbol]	Event Space	130 m <sup>2</sup>
[Symbol]	Storage Room	140 m <sup>2</sup>
[Symbol]	Garage	150 m <sup>2</sup>
[Symbol]	Pool	160 m <sup>2</sup>
[Symbol]	Landscaping	170 m <sup>2</sup>
[Symbol]	Driveway	180 m <sup>2</sup>
[Symbol]	Entrance	190 m <sup>2</sup>
[Symbol]	Reception	200 m <sup>2</sup>
[Symbol]	Office	210 m <sup>2</sup>
[Symbol]	Library	220 m <sup>2</sup>
[Symbol]	Art Studio	230 m <sup>2</sup>
[Symbol]	Yoga Studio	240 m <sup>2</sup>
[Symbol]	Spa	250 m <sup>2</sup>
[Symbol]	Massage Room	260 m <sup>2</sup>
[Symbol]	Relaxation Room	270 m <sup>2</sup>
[Symbol]	Breakfast Room	280 m <sup>2</sup>
[Symbol]	Bar	290 m <sup>2</sup>
[Symbol]	Event Space	300 m <sup>2</sup>
[Symbol]	Storage Room	310 m <sup>2</sup>
[Symbol]	Garage	320 m <sup>2</sup>
[Symbol]	Pool	330 m <sup>2</sup>
[Symbol]	Landscaping	340 m <sup>2</sup>
[Symbol]	Driveway	350 m <sup>2</sup>
[Symbol]	Entrance	360 m <sup>2</sup>
[Symbol]	Reception	370 m <sup>2</sup>
[Symbol]	Office	380 m <sup>2</sup>
[Symbol]	Library	390 m <sup>2</sup>
[Symbol]	Art Studio	400 m <sup>2</sup>
[Symbol]	Yoga Studio	410 m <sup>2</sup>
[Symbol]	Spa	420 m <sup>2</sup>
[Symbol]	Massage Room	430 m <sup>2</sup>
[Symbol]	Relaxation Room	440 m <sup>2</sup>
[Symbol]	Breakfast Room	450 m <sup>2</sup>
[Symbol]	Bar	460 m <sup>2</sup>
[Symbol]	Event Space	470 m <sup>2</sup>
[Symbol]	Storage Room	480 m <sup>2</sup>
[Symbol]	Garage	490 m <sup>2</sup>
[Symbol]	Pool	500 m <sup>2</sup>
[Symbol]	Landscaping	510 m <sup>2</sup>
[Symbol]	Driveway	520 m <sup>2</sup>
[Symbol]	Entrance	530 m <sup>2</sup>
[Symbol]	Reception	540 m <sup>2</sup>
[Symbol]	Office	550 m <sup>2</sup>
[Symbol]	Library	560 m <sup>2</sup>
[Symbol]	Art Studio	570 m <sup>2</sup>
[Symbol]	Yoga Studio	580 m <sup>2</sup>
[Symbol]	Spa	590 m <sup>2</sup>
[Symbol]	Massage Room	600 m <sup>2</sup>
[Symbol]	Relaxation Room	610 m <sup>2</sup>
[Symbol]	Breakfast Room	620 m <sup>2</sup>
[Symbol]	Bar	630 m <sup>2</sup>
[Symbol]	Event Space	640 m <sup>2</sup>
[Symbol]	Storage Room	650 m <sup>2</sup>
[Symbol]	Garage	660 m <sup>2</sup>
[Symbol]	Pool	670 m <sup>2</sup>
[Symbol]	Landscaping	680 m <sup>2</sup>
[Symbol]	Driveway	690 m <sup>2</sup>
[Symbol]	Entrance	700 m <sup>2</sup>
[Symbol]	Reception	710 m <sup>2</sup>
[Symbol]	Office	720 m <sup>2</sup>
[Symbol]	Library	730 m <sup>2</sup>
[Symbol]	Art Studio	740 m <sup>2</sup>
[Symbol]	Yoga Studio	750 m <sup>2</sup>
[Symbol]	Spa	760 m <sup>2</sup>
[Symbol]	Massage Room	770 m <sup>2</sup>
[Symbol]	Relaxation Room	780 m <sup>2</sup>
[Symbol]	Breakfast Room	790 m <sup>2</sup>
[Symbol]	Bar	800 m <sup>2</sup>
[Symbol]	Event Space	810 m <sup>2</sup>
[Symbol]	Storage Room	820 m <sup>2</sup>
[Symbol]	Garage	830 m <sup>2</sup>
[Symbol]	Pool	840 m <sup>2</sup>
[Symbol]	Landscaping	850 m <sup>2</sup>
[Symbol]	Driveway	860 m <sup>2</sup>
[Symbol]	Entrance	870 m <sup>2</sup>
[Symbol]	Reception	880 m <sup>2</sup>
[Symbol]	Office	890 m <sup>2</sup>
[Symbol]	Library	900 m <sup>2</sup>
[Symbol]	Art Studio	910 m <sup>2</sup>
[Symbol]	Yoga Studio	920 m <sup>2</sup>
[Symbol]	Spa	930 m <sup>2</sup>
[Symbol]	Massage Room	940 m <sup>2</sup>
[Symbol]	Relaxation Room	950 m <sup>2</sup>
[Symbol]	Breakfast Room	960 m <sup>2</sup>
[Symbol]	Bar	970 m <sup>2</sup>
[Symbol]	Event Space	980 m <sup>2</sup>
[Symbol]	Storage Room	990 m <sup>2</sup>
[Symbol]	Garage	1000 m <sup>2</sup>

PLANTA BAJA