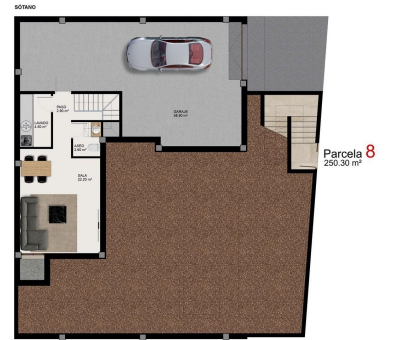


Parcela 8

PARCELA 8

Sub. Construcción Total 218,10 m²
Sub. Construcción Sótano 100,00 m²
Sub. Construcción Planta Baja 100,00 m²
Sub. Construcción Terraza 17,70 m²

LOS MÓDULOS DE REFERENCIA SE ILUSTRAN A TÍTULO INFORMATIVO Y NO SON VINCULANTES AL PROYECTO FINAL.



Parcela 8

PARCELA 8

Sub. Construcción Total 218,10 m²
Sub. Construcción Sótano 100,00 m²
Sub. Construcción Planta Baja 100,00 m²
Sub. Construcción Terraza 17,70 m²

LOS MÓDULOS DE REFERENCIA SE ILUSTRAN A TÍTULO INFORMATIVO Y NO SON VINCULANTES AL PROYECTO FINAL.



Property type : Villa

Location : Benijofar

Bedrooms : 4

Bathrooms : 3

Swimming pool : Private

Parking : Communal Parking

Built surface : 218 m²

Plot surface : 250 m²

New-build villas for sale in Benijofar, near Ciudad Quesada – A prime location on the Southern Costa Blanca – Discover this exclusive development of just 9 detached villas situated in Benijofar, right next to Ciudad Quesada, in the sought-after area of Atalaya Park. This peaceful residential neighbourhood offers the perfect balance between tranquillity and convenience, with supermarkets, restaurants, cafés and essential amenities just a stone's throw away. Benijofar is a charming Spanish town known for its relaxed lifestyle, whilst nearby Ciudad Quesada offers an international atmosphere with a wide range of leisure and dining options. The beautiful sandy beaches of Guardamar del Segura are just 8 km away, making this area an ideal place both for permanent residence and for enjoying a second home. – Modern single-storey villas with spacious layouts – Each villa is built on a single level with a floor area of approximately 110 m², situated on private plots ranging from 250 m² to 334 m². The homes are designed with a functional and contemporary layout, offering 3 bedrooms and 2 bathrooms, including one en suite. – The bright, open-plan living-dining area flows seamlessly into a modern, fully fitted kitchen, creating a comfortable and welcoming living space. Large windows provide direct access to the outdoor area, which includes a covered porch, a terrace and a private swimming pool, perfect for enjoying the Mediterranean climate. – Different layouts – Some units come with a basement of around 100 m², which is delivered fully finished with flooring, painted walls, lighting and electrical sockets. The basement benefits from natural light and ventilation thanks to the courtyard windows, making it a versatile space that can be used as a garage for several vehicles, a storage area, a gym, an office or a leisure room. – Optional upgrades allow buyers to customise part of the basement to convert it into additional living space with a lounge, a bedroom and a bathroom. There is also the option to add a private rooftop sun deck to further enjoy the outdoor lifestyle. – High-quality finishes and features – The villas are delivered with fully installed ducted air conditioning, modern kitchens fitted with appliances, and fully fitted bathrooms, including furniture, mirrors and shower screens. Special attention has been paid to every detail to ensure comfort, quality and functionality. – Excellent transport links and nearby attractions – Guardamar beaches: 8 km – La Marquesa Golf: 3 km – Torreveja: 12 km – Alicante city centre: 40 km – Alicante Airport: 35 km – Marinas and ports: 10–15 km – Your ideal home on the Costa Blanca – Whether you're looking for a permanent home, a holiday home or a smart investment, these exclusive villas in Benijofar offer privacy, modern design and a prime location. – Get in touch with us today for more information or to arrange a viewing and secure your new villa on the Costa Blanca. –



SOLARIUM

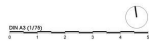


Parcela 8
250.30 m²

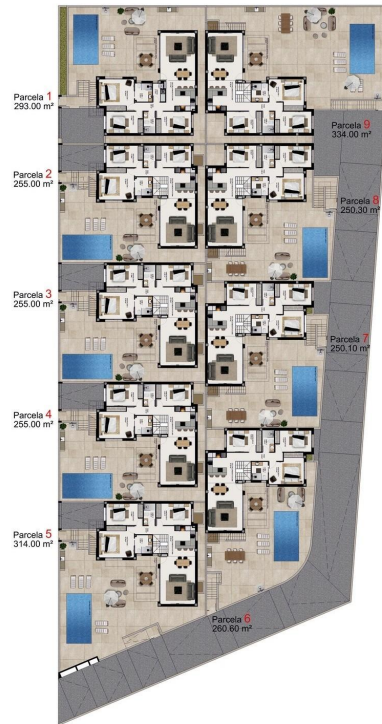
PARCELA 8

Sup. Construida total 218.10 m²
Sup. Construida Sótano 100.20 m²
Sup. Construida Planta Baja 100.00 m²
Sup. Construida terraza 17.70 m²

LAS IMÁGENES DE REFERENCIA SON SOLUCIONES APROXIMADAS Y NO SON VINCULANTES AL PROYECTO FINAL.



PLANTA BAJA



Parcela 1
293.00 m²

Parcela 2
255.00 m²

Parcela 3
255.00 m²

Parcela 4
255.00 m²

Parcela 5
314.00 m²

Parcela 9
334.00 m²

Parcela 8
250.30 m²

Parcela 7
250.10 m²

Parcela 6
200.60 m²

LAS IMÁGENES DE REFERENCIA SON SOLUCIONES APROXIMADAS Y NO SON VINCULANTES AL PROYECTO FINAL.

